

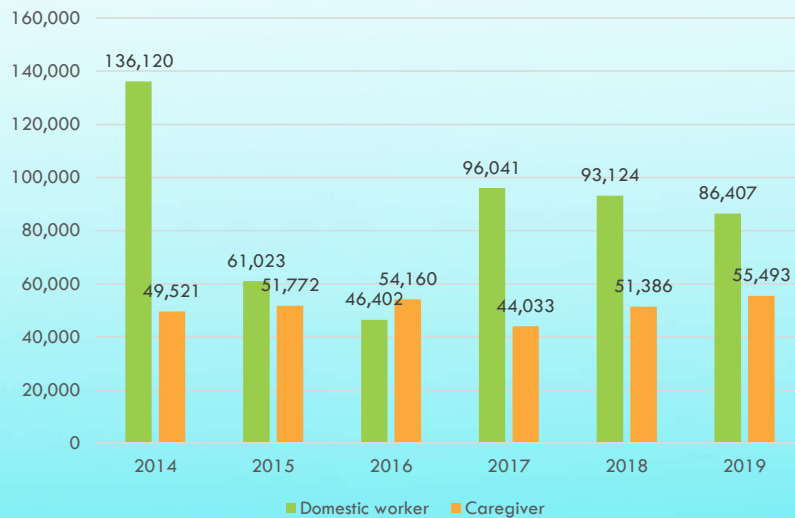


INTERNATIONAL MIGRATION OF INDONESIAN CARE WORKERS DURING COVID-19

MITA NOVERIA
RESEARCH CENTER FOR POPULATION
INDONESIAN INSTITUTE OF SCIENCES
24 NOVEMBER 2020

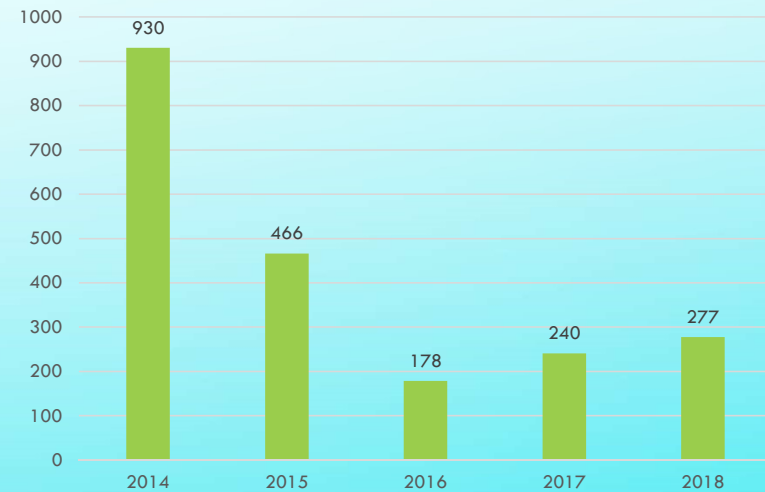
DEPLOYMENT OF INDONESIA'S MIGRANT WORKERS (2014 – 2019)

Deployment of Indonesian domestic workers & caregivers in 2014 - 2019



Source: BP2MI, 2018

Deployment of Indonesian nurses in 2014 - 2019



Source: BP2MI, 2018

DEPLOYMENT OF INDONESIAN NURSES AND CARE WORKERS (2014 – 2019)


	2014	2015	2016	2017	2018	2019
Nurse						
- Japan	41	66	46	29	31	38
- Other countries	889	400	132	211	196	
Total	930	466	178	240	227	
Care worker						
- Japan	146	212	233	295	298	300
- Other countries (Caregiver)	49,375	51,560	53,972	43,738	51,088	55,193
Total	49,531	51,772	54,160	44,033	51,386	55,493

Source: BP2MI, 2018



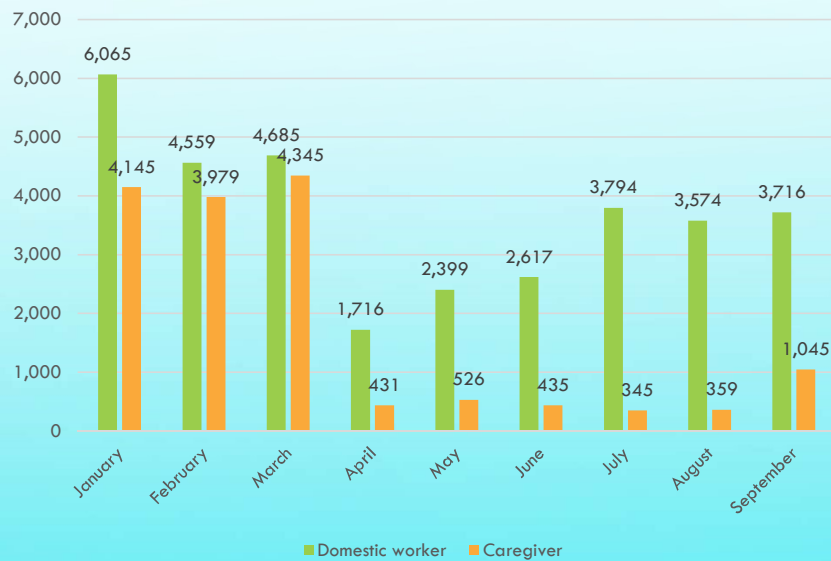
- Caregivers:

- Working and living at employer's house (informal workers): majority do not have nursing educational background; some are nursing school graduate
- Working at nursing home (formal workers): nursing school graduate

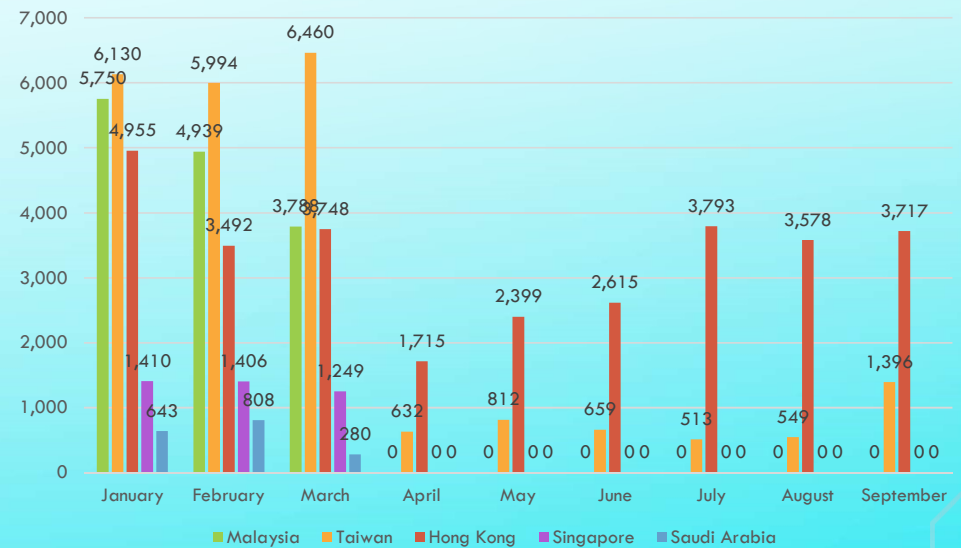
- Nurses deployed to Japan: nursing school graduate; holding Letter of Registration (as registered nurse in Indonesia) for 2 years; work at hospital as nurse assistant, do not allow to deal with patients
 - Care workers deployed to Japan: nursing school graduate, do not hold Letter of Registration, work at hospital or nursing home as care worker assistant
 - Nurses deployed to other countries (for example Saudi Arabia): nursing school graduate; may deal with patients in hospital
- 

DEPLOYMENT OF INDONESIAN MIGRANT WORKERS DURING COVID-19 PANDEMIC

Deployment of Indonesian domestic workers and caregivers in 2020



Destination countries of Indonesian domestic workers and caregivers in 2020



THE IMPACT OF COVID-19 PANDEMIC ON INDONESIAN'S MIGRANT WORKERS

Data from 12 labor attaches in 12 destination countries in early May 2020:

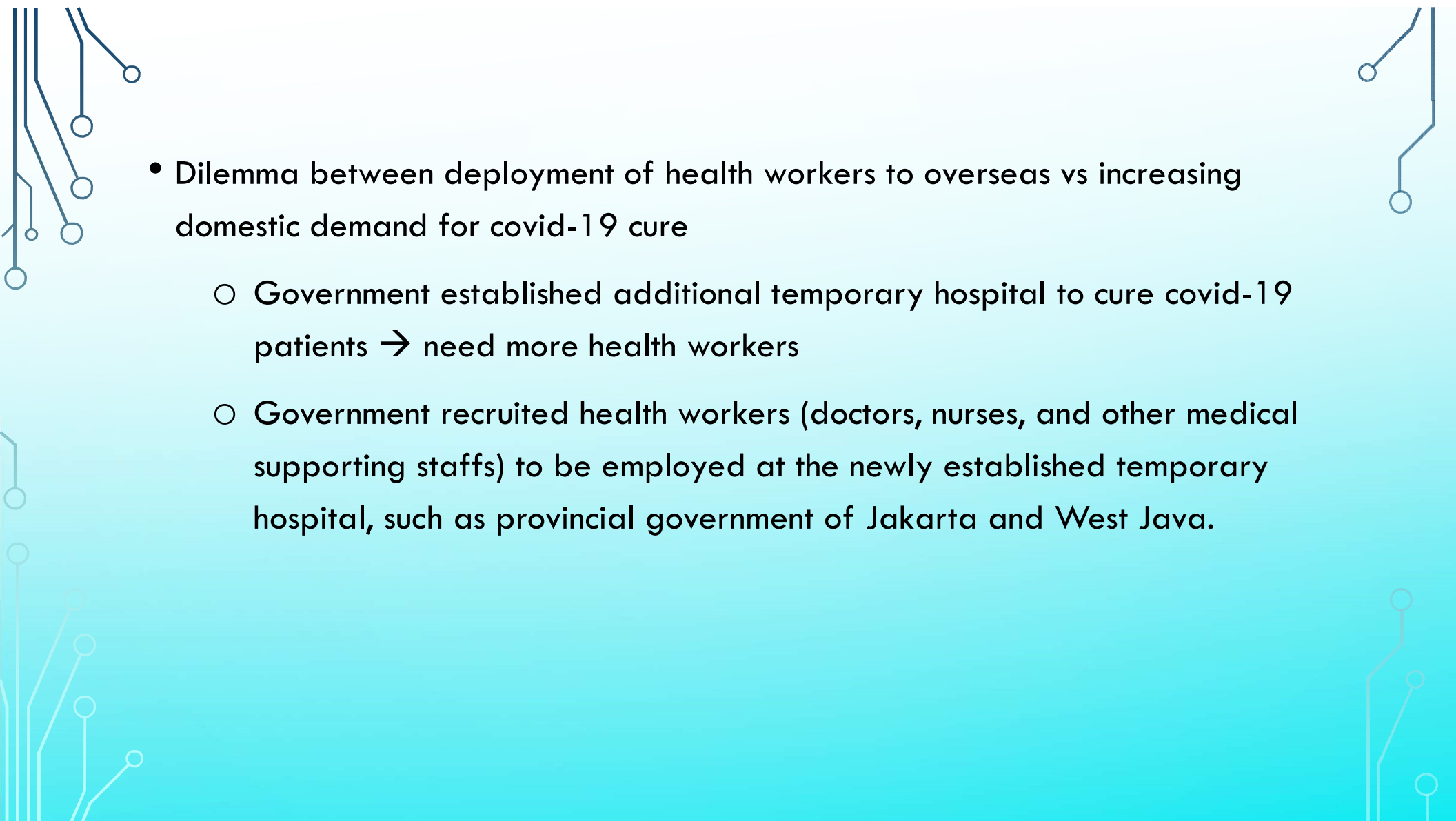
- 587 migrant workers were exposed to Covid-19 transmission
- 225 migrant workers were infected by Covid-19
 - Malaysia (108)
 - United Arab Emirate (40)
 - Saudi Arabia (37)
 - Qatar (19)
 - Kuwait (13)
 - Singapura (5)
 - Taiwan (2)
 - Brunei Darussalam (1).
- 10 migrant workers died in Jeddah (Saudi Arabia)

INDONESIA RETURNED MIGRANT WORKERS DURING COVID-19 PANDEMIC

- During period of 1 January – 25 April 2020: 126,742 migrants workers had returned home:
 - 75,424 were returned by Indonesian Covid-19 Task Force
 - 33,434 returned by their own expenses
 - 17,884 facilitated by by BP2MI
- 6,726 migrant workers from 46 destination countries returned home → finish working contract: Malaysia (2,124); Hongkong (1,556); Taiwan (1,202); Singapura (601); Saudi Arabia (230); some countries in East Asia, Middle East, Europe, America, and Africa (1,004)

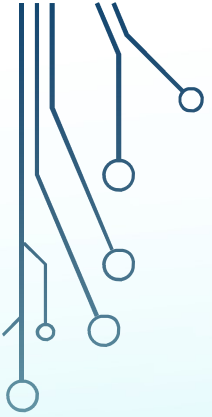
INDONESIAN GOVERNMENT POLICIES REGARDING DEPLOYMENT OF MIGRANT WORKERS TO OVERSEAS

- Suspension of migrant workers deployment to overseas started on 20 March 2020 (Ministry of Manpower Decree No. 151/2020 on temporarily suspend the placement of Indonesian migrant workers) → issued on 18 March 2020
- Starting on 29 July the government allowed deployment of migrant workers (Ministry of Manpower Decree No. 294/2020 on placement of Indonesian migrant workers during new normal era) → issued by at 29 July 2020.
 - Destination countries: Algeria, Australia, Hong Kong, South Korea, Kuwait, Maldives, Nigeria, United Arab Emirate , Poland, Qatar, Taiwan, Turkey, Zambia, and Zimbabwe → 88,973 prospective migrant workers to be deployed.

- 
- Dilemma between deployment of health workers to overseas vs increasing domestic demand for covid-19 cure
 - Government established additional temporary hospital to cure covid-19 patients → need more health workers
 - Government recruited health workers (doctors, nurses, and other medical supporting staffs) to be employed at the newly established temporary hospital, such as provincial government of Jakarta and West Java.

DEPLOYMENT OF CARE WORKERS DURING COVID-19 PANDEMIC

- No nurse are deployed in 2020 (G to G and P to P schemes)
- Planning of nurse deployment in 2021 → depend very much on agreement of Indonesian and destination countries
- Caregiver (not necessarily having nurse educational background; mostly do not have such qualification) to Taiwan has been been deployed on early August → high competition among sending countries due to very limited quota for quarantine place
- Additional efforts and costs for PCR test and other health related efforts at every phases of migration process
- Self discipline to implemented health protocol to prevent covid-19 transmission



Thank you

